

AN EVEN WIDER CHOICE

The range of Tournus **GC wash basins** now includes 8 models for 5 different ways to equip your kitchen.

The simple GC wash basin: the bowl, with apron around 3 sides and a 29 mm rim at the back, fixes to the wall with screws.



Ref. 806 381



Ref. : 806 383

The GC wash basin with 540 mm high splash back: the splash back is especially designed to make splashes run back into the bowl so that the wall is completely protected against dampness. The splash back includes an integral soap dispenser, capacity 500 ml.

The GC wash basin with 790 mm high splash back: this has all the advantages of the previous model, while the higher splash back brings the additional possibility of fixing a paper towel dispenser, capacity 250 towels.



Ref. : 806 385



Ref. : 806 397

Wall-mounted waste bins: : made of stainless steel or made of PVC

All these wash basins have knee-actuated controls, and the tap is turned on by pressing the paddle located on the front panel.



Ref: 806 395 Ref: 806 396

STURDY AND ERGONOMIC

The GC wash basin is a sturdy product designed to be long-lasting. It is made of grade stainless steel. It comes complete with a hot and cold water pre-mixer, equipped with check valves in order to protect the mains drinking water supply. It is supplied with the fixing strut, the hose to connect the pre-mixer to the goose neck, the goose neck itself, and the sink pipe and trap.

The tap outlet has an aerator giving a softer stream of water with fewer splashes.

A space is provided under the tank for storing the soap dispenser key.



25 avenue Jean Moulin
BP 59
71700 TOURNUS - FRANCE

France :
Tel : 03 85 27 42 00
Fax : 03 85 27 42 50

E-mail :
commercial@tournus.com

Export :
Tel : + 33 (0)3 85 27 42 65
Fax : + 33 (0)3 85 27 42 60

E-mail :
export@tournus.com

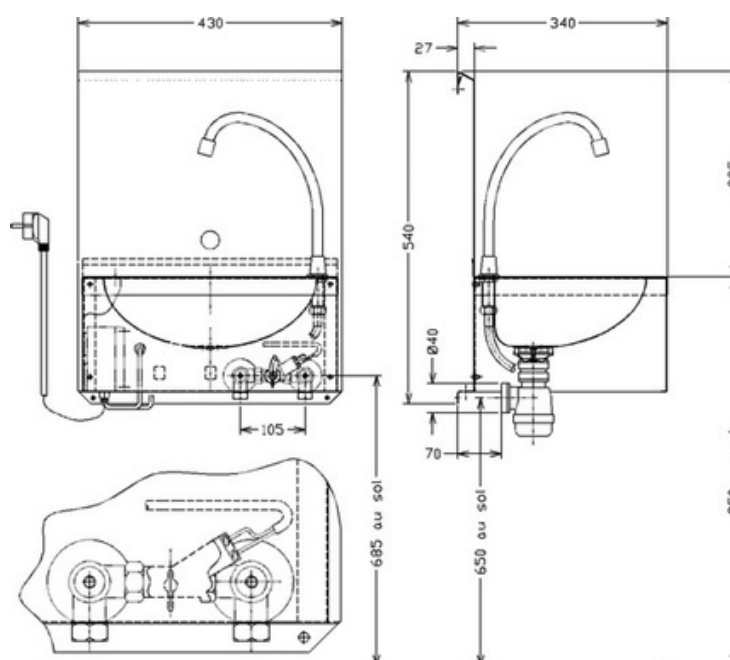
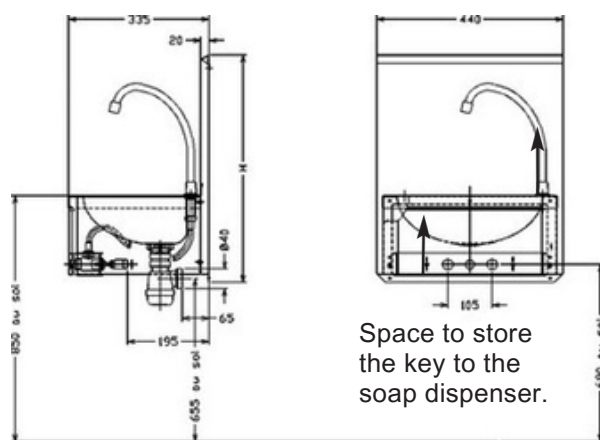
Web site :
www.tournus.com

RC Mâcon B 383 567 104
Code APE 295 E
SA Capital 16 355 625 €

GC WASH BASIN TECHNICAL SPECIFICATIONS

Common features:

- Made of stainless steel, pan 345 x 245 x 120 mm.
- Swan neck spout height 150 mm with aerator.
- Temperature adjustment by 2 EC-EF supply valves, equipped with non-return valves accessible under the control pad or front panel.
- Knee control with time delay.
- Flow rate adjustment via screw on push button head.
- Connection via 2 male threaded inlets 15 x 21.
- Supplied with mounting bracket, hose for connecting the premixer to the swan neck, swan neck and siphon.



Description	Overall dim. l x W x h (mm)	Reference
GC Wash-basin	415 x 310 x 185	806 381
GC wash-basin with upstand height 540 mm	440 x 335 x 540	806 382
GC wash-basin with upstand height 540 mm + soap dispenser	440 x 335 x 540	806 383
GC wash-basin with upstand height 540 mm + soap dispenser and stainless steel bin	440 x 335 x 790	806 397
GC wash-basin with upstand height 540 mm + stainless steel bin	440 x 335 x 790	806 393
GC wash-basin with upstand height 790 mm	440 x 335 x 985	806 384
GC wash-basin with upstand height 790 mm + soap dispenser and paper towel dispenser	440 x 335 x 985	806 385
GC wash-basin with upstand height 790 mm + soap dispenser and paper towel dispenser + stainless steel bin	440 x 335 x 1235	806 394