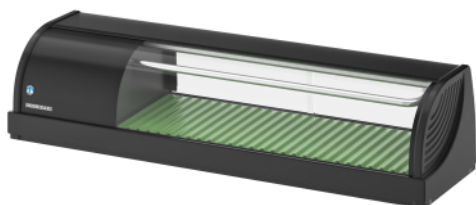


SUSHI CASE, LEFT SIDED HNC-120BE-L-B

Product series:

Item number: S051-C172

This Hoshizaki HNC-120BE-L-B is a Sushi Case, Left Sided. Our line of refrigerated display cases combines innovative features with a modern and elegant design, and are configured to highlight and preserve the freshness of even the most delicate fish types. The range is designed to maintain the most natural level of humidity and food-safe temperatures, even during peak serving times with frequent door openings.



Airflow

The smooth and diffused airflow works without any forced air circulation. This method creates ideal conditions avoiding unpleasant dehydration and weight loss of the stored goods.

Temperature Control

One of the strikingly simple solutions for easy and fast temperature control: The inside tray can be flipped face up or face down to set the perfect inside temperature for different types of fish. The elevated side wings of the trays allow more air circulation, lowering the storage temperature instantly.

Attractive Display

The tubular-shaped evaporator absorbs the heat continuously. Condensation freezes on its external surface, maintaining an attractive frost layer with no dripping

Convenience

The practical anti-slip top is ideal to place serving dishes. The condensing unit of all our models sit either on the right- or left-hand side, with the outflow of air positioned on the sides away from the operator

Easy Cleaning

The sliding door with 150 mm height and the lightweight ABS trays with a wave-shaped profile are easily disassembled and removed for daily cleaning

SPECIFICATIONS

Product title	Sushi Case, Left Sided	Net capacity (l)	42
CO2 equivalent (kg)	114	Net weight (kg)	32
Temperature (°C) approx.	5	Gross Weight Packed (kg)	44
Power supply	1/220 - 240V/50Hz	Connection load (kW)	0,15
Dimensions W x D x H (mm)	1200 x 345 x 270	Power supply	1/220 - 240V/50Hz
Refrigerant	R134a		