

# STAINLESS STEEL Cup Dispenser STANDARD SERIES

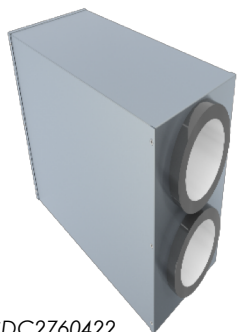
Model No: \_\_\_\_\_  
Quantity: \_\_\_\_\_

## FEATURES:

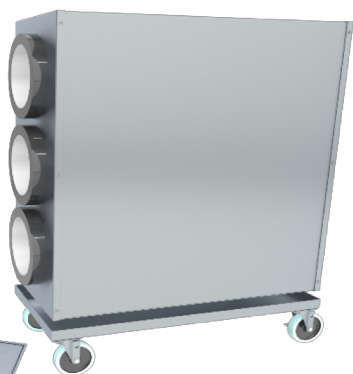
Cup Dispenser is completely manufactured from stainless steel and equipped with Cup Dispenser . Allowed to maximize counter space with vertical cabinets and easy way to organize cups . AS Option caster wheel 3"

## CONSTRUCTION:

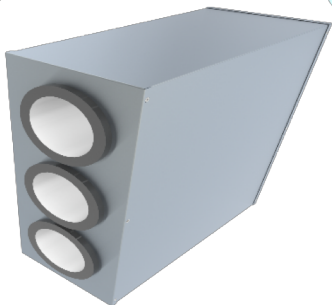
Fully welded structure and polished for a monolithic appearance.



CDC2760422



CDS2760753



CDC2760653

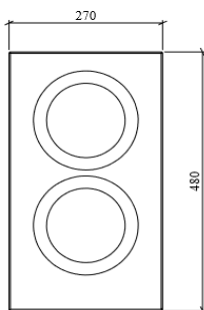
## MATERIAL:

PARTS	S-LINE (STANDARD)
Front & back cover	S/S 304 1.0MM THICKNESS
Body	S/S 304 1.0MM THICKNESS
Caster Wheel	3"
Cup Dispenser	DAC-05
SCREW	M4 FLAT Head BOLT
EQUIPMENT BUILT	
SURFACE	HAIRLINE FINISH (304)
ASSEMBLY/SHIPPING	ASSEMBLY

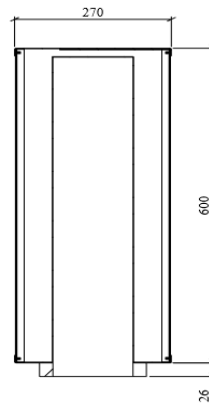
## DIMENSIONS:

TYPE	LENGTH	WIDTH	HEIGHT
TOP COUNTER WITH 2 CUP DISPANSER	270	600	480
TOP COUNTER WITH 3 CUP DISPANSER			700
UNDERCOUNTER WITH 2 CUP DISPANSER			800
UNDERCOUNTER WITH 3 CUP DISPANSER			800

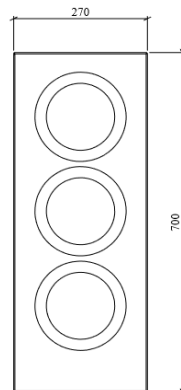
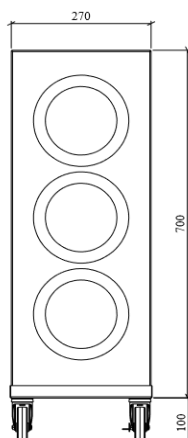
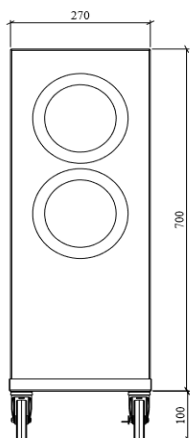
## DIMENSION AND SPECIFICATIONS:



TOP COUNTER WITH 2 CUP DISPANSER



26



700

UNDERCOUNTER WITH 2 CUP DISPANSER

UNDERCOUNTER WITH 3 CUP DISPANSER

TOP COUNTER WITH 3 CUP DISPANSER

C 27 60

NO. OF  
DISPANSER:  
2 OR 3

HEIGHT

WIDTH

LENGTH

TYPE DISPANSER :  
DS = UNDERCOUNTER DISPANSER  
DC = TOP COUNTER DISPANSER