

STAINLESS STEEL

MOP Sink Standalone

STANDARD SERIES

Model No: SMPS606470
Quantity: _____



SMPS606470

FEATURES:

Mop sinks Standalone are built with heavy gauge 16 (1.5mm) stainless steel, fully welded joints with radii on all corners and polished for a smooth finish.

CONSTRUCTION:

Top and sink bowls are Tig welded, polished joints for a monolithic appearance. Fixed with stainless steel offset clips.

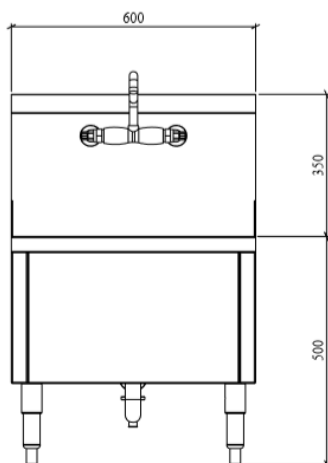
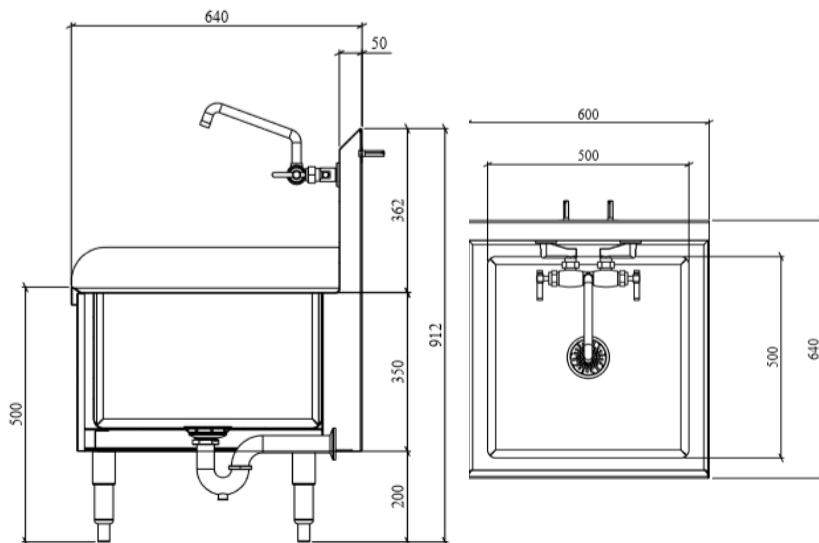
MATERIALS:

PARTS	S-LINE (STANDARD)
TOP	S/S 304 1.5MM THICKNESS
CROSS BRACE	25MM S/S TUBE
STIFFENERS	S/S 304 1.5MM BASE
LEGS (ROUND)	42MM S/S TUBE
WALL MOUNTED FAUCET	KL54-8008-SE4
P-TRAP & TAIL P ILE	SINK P TRAP 1 1-2" METAL
SINK STRAINER	SINK STRAINER LD-830
EQUIPMENT BUILT	
SURFACE	HAIRLINE FINISH (304)
ASSEMBLY/SHIPPING	ASSEMBLE

DIMENSIONS:

LENGTH	WIDTH	HIGHT
600	640	700+350

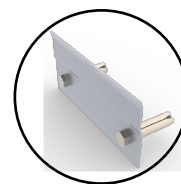
SINK BOWL SIZES: 500 x 500 x 300 MM



ACCESSORIES AND OPTIONS(✦) :



WALL MOUNTED FAUCET



OFFSET CLIP



HOT & COLD FLEXIBLE HOSES



P-TRAP & TAIL PILE



SINK STRAINER