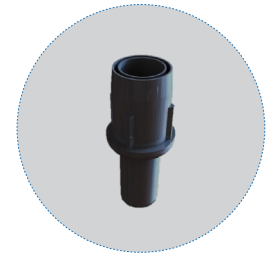




Adjustable Shelves



Adjustable Bullet Feet

STANDARD FEATURES

DESIGN

- Cabinet design is well-engineered to meet functionality, and to fulfill operational aspects and user expectations.
- Efficient refrigeration system to provide user colder products temperature with lower operational cost.

REFRIGERATION SYSTEM

- Corrosion-proof hot gas condensate evaporation.
- More organized and less exposed wires.
- Bolted back cover for easy maintenance access.
- Large evaporator fan blades to give lower velocity and high-volume airflow.

CABINET CONSTRUCTION

- Two (2) exterior finish choices – Stainless steel and black coated galvanized iron.
- Side and top double glass for great product visibility.
- Glass with panorama borders for better design integration.
- Entire cabinet structure is foamed-in-place using a high density polyurethane insulation.
- Heavy duty and welded structure prior coating for corrosion protection.

SHELVING

- Three (3) adjustable shelves with plenty of space.
- Shelf support brackets made of same material as cabinet interior; shelves are adjustable on 30mm (13/16") increments.
- Shelf front stopper trim.

COLORS

- Available in two colors, black & stainless steel.
- If you want to get different colors, please contact our sales representative.

LIGHTING

- Integrated magnetic LED lights – 4 hidden lights.

MODEL FEATURES

- Two (2) colors / finishes: Stainless steel and black.
- Effortless usage for both customers and staff.
- Adjustable bullet feet with range of 50mm.
- Adjustable shelves on 30mm (13/16") increments.
- Interior and refrigeration system are isolated with insulated base.
- Stable temperature levels to realize products' needs.

SPECIAL FEATURES

- LED lights are used which is long lasting and energy-efficient.
- Optimized honeycomb is used to get better air circulation through the cabinet.
- A double-glazed glass system to reduce heat transfer from outer atmosphere to products inside the cabinet.

ELECTRICAL

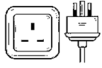
- Unit is completely pre-wired at factory and ready to connect to a 240/50 - 60/1 phase, 13 amp dedicated outlet.

WARRANTY

Two years warranty on all parts

DATA*

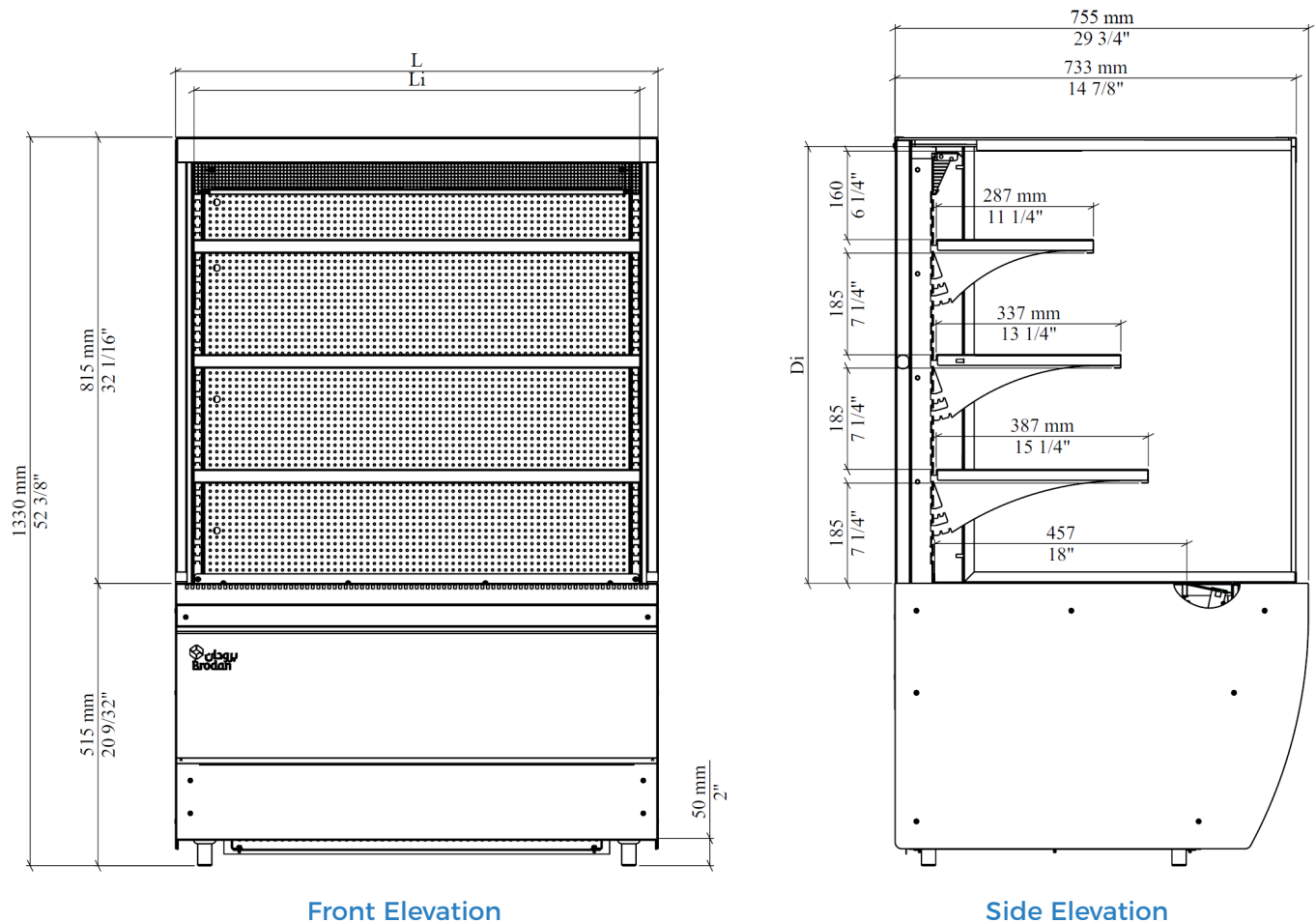
Cabinet Model	Internal Volume (m ³)	External Cabinet Dimensions (mm)			Internal Cabinet Dimensions (mm)			Shelves and base width (mm)	Shelves depth (mm)			Base depth (mm)	Weight (kg)
		L	D	H**	L _i	D _i	H _i		Top	Mid	Low		
600	0.25	605	755	1330	563	680	800	533	287	337	387	457	~146
900	0.38	900			840			815					~164
1500	0.63	1500			1460			1430					~245

Cabinet Model	Horse Power (HP)	Amps	Refrigerant Charge (g)	Refrigerant Type	Temperature Range (°C)	Voltage/Hertz/Phase	Plug type
600	1/2	3.5	-300	R404A	+2 to +6	230V/50 - 60Hz/1 Ph	 Type G
900	3/4	5	500				
1500	3/4	7	-600				

* BRODAN reserves the right to make changes at any moment and without prior notice.

**Height can be adjusted -10 / +40mm

PLAN VIEW



Front Elevation

Side Elevation

ORDERING

Cabinet Model	Color Version	
	Black	Stainless Steel
600	SOUDA-SGNG-600-BLK	SOUDA-SGNG-600-SS
900	SOUDA-SGNG-900-BLK	SOUDA-SGNG-900-SS
1500	SOUDA-SGNG-1500-BLK	SOUDA-SGNG-1500-SS